

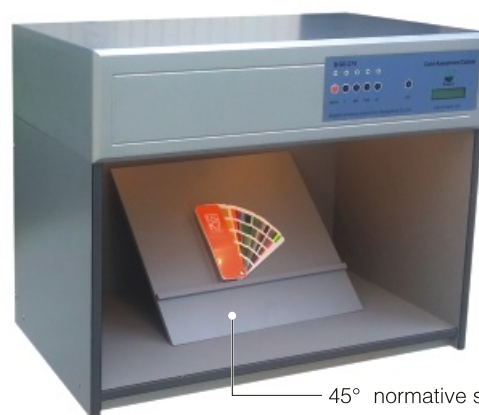
# Color Assessment Cabinet

The cabinets supplied the supply of some different lights and are controlled by a microprocessor LCD Screen that shows each Lighting usage Time. Each Button controls the individual set of Lights. The CLR (Clear) button allows the resetting of the Lighting Usage Time to ZERO when new lights are replaced. The ON/OFF Switch button must be switched off during long hours (more than 3 to 4 hours) of non-operation. This is to reduce the possibility of heat-up as well as to increase life span of the electronic ballast, All Lights can be switched on at the same time as according to the user needs. The optional Diffused Glass Panel below the lights ensures the elimination of direct reflection of lights to viewing products, There is no Warm-Up time/Flickering of Lights when there is a constant electrical supply. All electrical components used are of low power consumption and heat generation for energy efficiency in.

The international approved Light Gray Non-Reflective Surface ensures that no light is being reflected from the surface during color matching, So, what you see of your products in our Biuged Color Assessment Cabinets will be as natural as what you view them under the natural color matching conditions. The Non-Reflective Surface has certain degree of roughness not only acts as light absorption when light are illuminated, but it is also scratched-resistance, Many Color-Matching Cabinets do not have this dual ability.

## Main Technical Parameters:

- ★ Time running display for each light source.
- ★ Auto conversion between light sources; Different spectrum with same color.
- ★ No need warm-up and no flicker, enable quick and reliable assessment to sample.
- ★ Low power-consumption; No heat emission; Efficient illumination.
- ★ Small size and convenient to use for laboratory or production line.
- ★ Weight: 35Kg
- ★ Dimensions: 710 x 530 x 570 mm



## ★ Light source:

Light source	Description	Number of Light	Power	Color Temperature
D65	International-standard Artificial Daylight	2 pcs	18W	6500K
TL84	Applicable to stores in Europe, Japan and China	2 pcs	18W	4000K
CWF	Cool White Fluorescent	2 pcs	20W	4150K
F/A	Comparison referential light source, Applicable to family/hotel	4 pcs	40W	2700K
UV	Ultraviolet light source	1 pc	18W	Wavelength 365nm
U30	Warm White Fluorescent	2 pcs	18W	3000K

## ◆ Ordering Information

Light source → Ordering Information ↓	D65	TL84	F/A	UV	CWF	U30
BGD 274	✓	✓	✓	✓		
BGD 275	✓	✓	✓	✓	✓	
BGD 276	✓	✓	✓	✓	✓	✓

**Optional accessories: BGD 277---45° Normative Stand** (has accurate angles and has the same color as the Color Assessment Cabinet/this makes a non-interference viewing effect).



**Biuged instruments also offer some special size (Dimensions: 1310x600x800 mm) color assessment cabinets according to customer's different demand.**