

Digital Fishing Barometer



Digital Fishing barometer

Thank you for your purchase of Sunroad SR204 Digital Fishing Barometer.

Design Strategy:

It has been known that barometric pressure is one of the most important factor to influence fishing. When barometric pressure is higher, DO in the water will be higher, Fish will be active and has a good appetite. On the contrary, fish will be dispirited and has a bad appetite. If we know the trend of barometric pressure, it can greatly increase the chance of successful fishing.

Functions:

- ◆ Smart tracking barometric pressure for 6 fishing places
- ◆ Smart remind suitable fishing time
- ◆ 24 hours barometric pressure trend chart
- ◆ Adopt super-accuracy barometric sensor from Swiss
- ◆ 3 days air pressure & temperature record
- ◆ Incorporates altimeter, barometer, temperature, weather forecast, countdown timer, time & date functions etc.
- ◆ IPX 4 waterproof

Specifications:

Barometer:

Range from 300hpa to 1100hpa
Hpa and Inhg unit switch available
Resolution of 0.1hpa

Thermometer:

Range from -10°C to +60°C
°C and °F unit switch available
Resolution of 0.1 degree

Data records: 6 sets data for fishing places including pressure, time, water depth
countdown timer: Range from 0 to 59:59:59.

Weather forecast:

4 weather status indicating, sunny - partly cloudy - cloudy - rainy.
The weather forecast for next 12 to 24 hours

Time: 12h and 24h format switch available,

Date: Month/day format or day/month can interchangeable

Three days history data record: Record three days maximum (minimum) pressure, maximum (minimum) temperature, provide the basis for fishing.

Low battery alert: Voice remind every 5 minutes when battery is low power.

Battery life: about 12 months.

Spare parts: manual*1 Carabiner: 1pcs Battery:1pcs

1. Start

Installing the Battery

Rotate the back cover counter clockwise, gripping the unit with both hands, using your index fingers and thumbs. Rotate until it stops, then gently pry off the back cover with your fingers, exposing the battery compartment.

Note: you may have to squeeze on the outer ring (not the display) and apply force in the clockwise and counterclockwise direction repeatedly (work back and forth) to free the back cover after extended use, due to sweat and other debris.

Make sure your fingers are dry.

Insert the CR2032 battery (+ side up), and close the back cover, insuring the gasket is firmly seated in the housing trace, as shown in Figure 1.

To remove the battery, use a small pen or paperclip to pry the battery out of the battery compartment.

To close the back cover, rotate the back cover clockwise until the back cover is completely closed. The display should be powered up in the time and date mode, and ready for use.

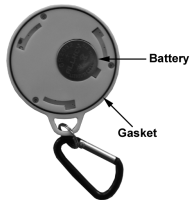


Figure 1

2. Operating instructions

2.1 Default mode - time mode

- LCD display: weather forecast, temperature, time, date, local air pressure, pressure trend arrow, pressure trend chart, fish icon (if pressure is not fit for fishing, this icon will not display on screen) etc. Please refer figure 2.

- Pressure trend chart shows air pressure change in passed 24hours, X-axis is time, Y-axis is air pressure (every division means 2hpa)

- Pressure trend arrow forecast pressure change in future 12 hours.

- If current pressure is higher than fishing pressure, the fishing icon will display on screen. If not, the fishing icon will disappear.

- Before first using, please set up initial data such as time, date, temperature unit, air pressure unit, altitude unit and sea level altitude etc. Detail setting method, please refer item 2.2 (Setting mode) .

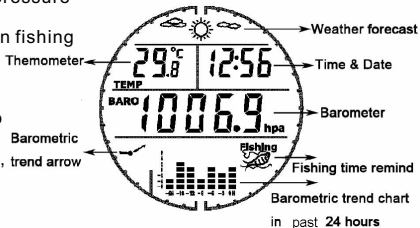


Figure 2


2.2 Setting mode

● Under time mode, long press **SET** 5 second to enter setting mode, weather icon will be flashed. Press **MODE** to switch setting items; Press **SET** to detail item. Long press **SET** again to save and exit setting mode.

In setting mode, if there is no operation in 30 seconds, it will save and exit setting mode automatically.

● Steps: Time mode (Long press **SET** 5second) → weather forecast (press **MODE**) → temperature unit (°C/°F) (press **MODE**) → 12H/24H (press **MODE**) → hour (press **MODE**) → minute (press **MODE**) → month (press **MODE**) → date (press **MODE**) → pressure unit (hpa/inHg) (press **MODE**) → altitude unit (m/ft) (press **MODE**) → Suitable fishing pressure (thousand hundred ten one) (Long press **SET**) → Saving and exit to default mode (time mode) .

2.3 Suitable fishing pressure setting

- The default suitable fishing pressure of this unit is 1002hpa. When current air pressure is higher than it, fishing icon  will display on screen.
- Different region, different sea level altitude, the fishing pressure will be different also. Please set suitable fishing pressure base on your local altitude.
- Detail setting method, please refer item 2.2.

Sheet of fishing pressure for different altitude (Only for reference)

Altitude (M)	Fishing pressure (hpa)	Altitude (M)	Fishing pressure (hpa)	Altitude (M)	Fishing pressure (hpa)
50	1002	1000	889	2100	759
100	996	1500	830	2200	747
200	984	1300	854	2300	735
300	972	1400	842	2400	723
400	960	1500	830	2500	711
500	948	1600	818	2600	699
600	937	1700	806	2700	687
700	925	1800	795	2800	676
800	913	1900	783	2900	664
900	901	2000	771	3000	652

2.4 Countdown timer mode

- Under time mode, press button MODE to enter countdown timer mode.
- LCD display: weather forecast, temperature, countdown timer, suitable fishing icon. Please refer figure 3.
- Turn on/off countdown: press SET button to turn on/off countdown. When times up, it will remind by sound in 30 seconds.

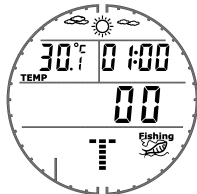


Figure 3

Countdown timer setting

- Under countdown mode, long press button SET 3 seconds to open backlight; long press it 6 seconds to enter countdown setting mode. Please refer figure 4.
- Press button MODE to switch setting items. Press button SET to set digit. Long press SET to save setting and exit to countdown mode.

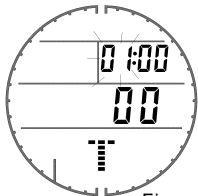


Figure 4

2.5 Altimeter mode

- Under time mode, press MODE two times to enter altitude mode.
- LCD display: weather forecast, temperature, sea level altitude, climb altitude. Please refer figure 5.
- Climb altitude: Long press MODE to clear climb altitude to zero and start to measure.

Sea level altitude setting

- The altimeter is measured base on air pressure which changes at any time. Altimeter will take this change as a vertical movement. Normally there will be around 20 m changes per day.
- So it's necessary to calibrate the altitude after we know accuracy sea level altitude.
- Under altitude mode, long press SET 6 seconds to enter sea level altitude calibration, please refer figure 6.
- Press MODE to switch digit. press SET setting number. Long press SET to save setting and exit to altimeter mode.

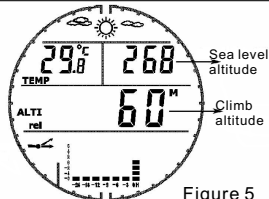


Figure 5



Figure 6

2.6 3days history record mode

- Under countdown timer mode, press MODE three seconds to enter 3days history record mode "HISTORY" will display on screen.
- LCD display: weather forecast, highest (lowest) temperature, date, highest (lowest) air pressure, pressure trend chart. Please refer figure 7.
- Press MODE to browse three days record in turn. Press SET to browse the highest (lowest) temperature and highest (lowest) air pressure for each day.

PS: 3days history record is applying in very cold weather condition such as winter or autumn. if temperature difference in 3 days is changing smaller and smaller, or if the lowest temperature in 3 days is becoming higher and higher, it should be fit for fishing in future few days. Under 3days history record mode, there is maximum and minimum temperature for each day. It can help us to know whether it fit for fishing or not.

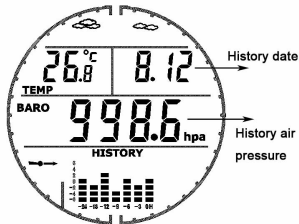


Figure 7

2.7 Pressure of fishing places

- Under time mode, press SET to enter pressure of fishing places mode.
- LCD display: fishing water depth, time, initial record air pressure, fishing place code, fishing icon. Please refer figure 6.
- Press MODE to switch among different fishing places code

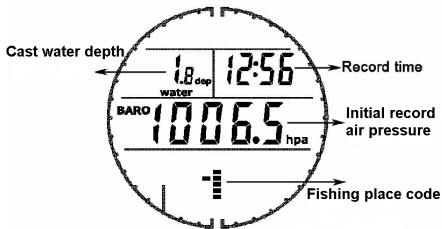
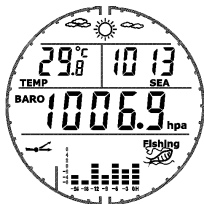


Figure 8

2.7.1 Record initial air pressure for fishing place

Before tracking air pressure for fishing places, at first time when arriving the fishing place (such as one lake, one river etc.), we should record an initial air pressure. There are two methods to record initial air pressure as below,

1. Method , under time mode, long press MODE to collect current air pressure (air pressure will flash on screen), press SET to enter fishing place mode, Press MODE to select fishing place code. Press SET to save and exit.



Press SET
to save and exit

Long press MODE,
then press SET



Press MODE to select
code of fishing place



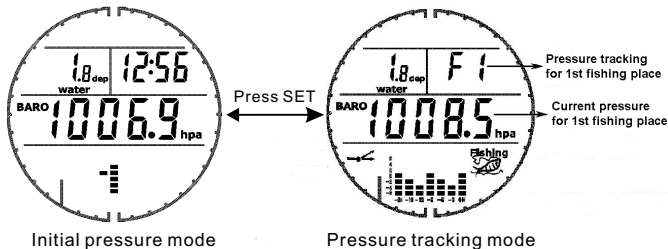
2. 7.2 Pressure tracking for fishing place

● Step 1 Link fishing place

At fishing place, recording the initial air pressure base on method of item 2.6.1. When coming back usual staying place (such as home or company), please long press MODE to link fishing place under time mode.

● Step 2 Checking current air pressure of fishing place when we are staying at usual place (such as home or company), steps are as below,

1. Under time mode, press SET two times to enter pressure tracking mode.
2. Press MODE to switch fishing place code.



2.8 Low Battery Indicator

Unit will be alarm every 5 seconds when battery is low power.

Remark: Please change battery when low power supply. Otherwise it can not measure pressure accuracy or bring other problems.

2.9 How to know fishing time is coming?

- 1) Checking fish icon whether display on screen or not. If fishing icon is displayed on screen, it fits for fishing.
- 2) Normally pressure range from 1002 hpa (29.58inHg) to 1005.4hpa (29.67inHg), it is suitable for fishing. Range from 1006hpa (29.70inHg) to 1028hpa(30.35inHg), it is perfect for fishing. For other pressure, it is not suitable for fishing.
- 3) Checking pressure trend arrow, if the arrow is increasing, it will be great time for fishing.
- 4) During Winter or Autumn, if temperature difference in 3 days is changing smaller and smaller, or if the lowest temperature in 3 days is becoming higher and higher, it should be fit for fishing in future few days.

Attentions:

1. This unit is not designed for professional or special purpose.
2. The unit is water proof but not for diving. Don't submerge in water.
3. Do not operate outside of the specific temperature range (-10° to 60°C)